

aniVital®

SPECIALIZED PET NUTRITION



aniVital® products are absolutely new to retailers and available without prescription. The products offer prompt, reliable help for specific health problems.

The new Tabs are a sensible food supplement and are so tasty that dogs enjoy them as a treat. That's why targeted dosage is so easy.

Add these problem-solvers to your range and see how they enhance your profit and professionalism.

Allergies?

Why aniVital® for your pet?

When dogs and cats share their living space with us humans, problems can occasionally arise. Allergies, excess weight or difficulties with the immune metabolism are just a few of the things that can adversely affect the lives of dogs and cats. Many of these problems can be controlled with appropriate nutritional supplements or special diets. **aniVital®** offers you a tasty as well as effective solution for a large number of these problems. **aniVital®** products supplement your pet's diet with useful nutrients known for their supportive effects in remediating dietary problems.

Help! My dog has a food allergy

How do I recognise a food allergy?



Neither experts nor laymen can easily detect food intolerance at first glance. **Itching, scratching and constant licking of fur** are the initial warning signs. Consequences of a food allergy may include **localised hair loss, or skin infections** which manifest themselves in the form of reddening, pustules and eczema.* However, food intolerance may also produce **digestive problems** such as diarrhoea or bloating.

** Warning: These symptoms can also indicate a common skin disorder.*

What can I do if a food allergy is suspected?

It's important to find out which ingredients of the pet food are possibly triggering the allergy. Food proteins are almost always responsible. An increased risk of allergy exists for proteins of inferior quality, for certain food proteins and food with many different protein sources. **aniVital®**, as a hypoallergenic diet pet food with easily digestible, defined protein sources is the optimal solution in the case of a food allergy.

According to surveys of veterinarians, the following foods are most frequently connected with dermatological symptoms of a food allergy: Wheat, Beef, Maize, Poultry, Soya, Milk products, Preservatives and colourings.

Instant Energy/Puppy Milk

aniVital® Instant Energy

Dietary supplement for dogs with high activity levels

Analytical constituents:

Protein	15,0 %
Fat content	75,0 %
Crude fibre	0,2 %
Crude ash	3,5 %
Moisture	5,0 %

Convertible energy content: 30,5 MJ/Kg (7.300 kcal/kg)

Uses:

- Sled dogs
- Hunting dogs
- Greyhounds to refresh their energy reserves (1–2 hours before a race or during a racing day)
- Competition dogs
- Search-and-rescue dogs

Benefits:

- Easily available energy from medium-chain fatty acids (coconut and palm fat)
- Dried algae (Schizochytrium sp.) supplies important omega-3 fatty acids
- High acceptance rate

aniVital® is especially good for watering sled dogs or other dogs with high-endurance work or training activities. Furthermore aniVital® Instant Energy could fill up in the short term the energy reserves of dogs during competitions and it is very useful as an additional energy source for the lactating bitch.



Available in:

- Jar 500g Article no. 523115
- Tub 3kg Article no. 523105

aniVital® Puppy Milk

Complete food for dogs

Analytical constituents:

Protein	33,0 %
Fat content	39,0 %
Crude fibre	0,2 %
Crude ash	7,0 %
Calcium	1,1 %
Phosphorus	0,8 %
Lactose	17,0 %

Uses:

- Raising puppies without their mother
- Illness or lack of milk of the mother
- For relief of mothers of large litters
- Also for preparatory feeding of the pregnant bitch. Two weeks before the birth of the litter, 50–100 g aniVital® Puppy Milk can be added to the mother's normal daily ration.



Available in:

- Jar 500g Article no. 523005
- Tub 2,5kg Article no. 523025

Diet pet food for dogs

Use:

aniVital® HA which comes in fish and lamb flavours, is a hypoallergenic diet pet food for use in the case of food allergies or food intolerance (skin or intestinal problems caused by food). Both varieties are especially tasty and easily digestible.

aniVital® HA FISH

Benefits:

- **Selected protein sources**
(Herring and krill are the only sources of animal protein)
- **Selected carbohydrate sources**
(Oats and potatoes as sources of carbohydrates)
- **Higher content of omega-3 fatty acids**

Ingredients: Fodder oat flour (42 %); Herring meal (20 %); Potato starch; Marine zooplankton, ground (5 % Krill); Linseed; Poultry fat; Vegetable oil (palm, coconut); Dried beet pulp; Grape pips expeller; Brewers' yeast, dried; Salmon, hydrolysed; Dicalcium phosphate; Sodium chloride; Potassium chloride; Yucca schidigera



Available in:

- 800 g Article no. 738015
- 4 kg Article no. 738115
- 12,5 kg Article no. 738215

Protein %
Fat content %
Crude ash %
Crude fibre %
Ca %
P %
Na %
Mg %
Energy (ME) MJ/kg

A I.U.
D3 I.U.
E mg
B1 mg
B2 mg
B6 mg
B12 mcg
Nicotinic acid mg
Ca-D-pantothenate mg
Folic acid mg
C mg
Biotin mcg
Choline chloride mg

Fe mg
Cu mg
Zn mg
Mn mg
Se mg
J mg

Lecithin mg per kg
Omega-6-fatty acids %
Omega-3-fatty acids %

aniVital® HA LAMB

Benefits:

- **Selected protein sources**
(Lamb and anti-allergenic liver hydrolysate as the only sources of animal protein)
- **Selected carbohydrate sources**
(Rice as a gluten-free source of carbohydrates)
- **Higher content of omega-3 fatty acids**

Ingredients: Rice (49 %); Lamb meal (20 %); Liver hydrolysate (anti-allergenic, molecular size < 6,000 Dalton); Potato protein; Linseed; Poultry fat; Vegetable oil (palm, coconut); Dried beet pulp; Grape pips expeller; Brewers' yeast, dried; Lamb liver, hydrolysed; Sodium chloride; Potassium chloride; Yucca schidigera

HA FISH	HA LAMB
Analytical constituents	
24,0	24,0
12,0	12,0
6,5	6,5
2,5	2,5
1,3	1,3
0,9	0,9
0,3	0,3
0,1	0,1
15,2	15,2
Vitamins (per kg, added)	
13.000	13.000
1.300	1.300
130	130
10	10
15	15
10	10
220	220
52	52
25	25
1,5	1,5
55	55
550	550
1.600	1.600
Trace elements (per kg, added)	
200	200
12,5	12,5
150	150
40	40
0,15	0,15
2	2
Other nutrients	
2.400	2.800
2,6	2,2
1,5	0,9



Available in:

- 800 g Article no. 738005
- 4 kg Article no. 738105
- 12,5 kg Article no. 738205



CaniFiber® Tabs

Dietary supplement for dogs to support weight loss

Uses:

- Obesity (body weight > 20 % over the average for the breed) => Significant weight reduction is required
- Slightly overweight => the pet's weight should be slowly reduced and stabilized.
- Little exercise
- Tendency to be overweight in old age
- As support for digestive disorders caused by food

Ingredients: Lignocellulose; carrot fibre; Apple fiber; Orange fibre; Poultry meat meal; Whey powder, Brewers' yeast, dried; Egg, dried; Poultry liver, dried, Herring meal; Psyllium husks; Magnesium stearate, soybean oil

Analytical constituents: Protein 18 %; Fat content 5,5 %; Crude fibre 21 %; Crude ash 7 %

Additives per kg: **Nutritional additives:** L-carnitine 6500 mg **Technological additives:** Antioxidants: natural extracts with a high content of tocopherol (=natural vitamin E) 200 mg



Canifiber® Tabs supplements the dog's diet in a targeted manner with L-carnitine and a balanced combination of fibres known for their regulating effect on digestion and their satiating effect:

Dietary fibre is divided into:

- Insoluble fibres (e.g. cellulose, hemicellulose) do not contain any usable energy and thus reduce the energy density of the total ration when used as a supplement. They also have a solidifying influence on the contents of the dog's intestines.
- Soluble fibres (e.g. pectin, pentosans) are partially metabolised by intestinal bacteria and have a prebiotic effect on the intestinal flora.

By binding water, dietary fibre extends the transit time of the intestinal content and help to alleviate diarrhoea. A high rate of expansion also promotes satiation.

L-Carnitin (Supplement: 6,500 mg/kg - corresponds to 75 mg L-carnitine per 10 kg dog's weight when the recommended dose is given) ensures that high volumes of fatty acids in the metabolism are properly processed and the by-products (ketone bodies) can be L-carnitine promotes fat-burning, reduces fatty deposits in tissues and supports cardiac activity.

Use and dosage:

Giving the correct dosage of **Canifiber® Tabs** is very easy. It is fed as a supplement to your dog's regular diet - no diet change is required.

Thanks to their outstanding acceptance, the Tabs also serve as a satiating reward between meals and thus replace other energy-rich snacks.

For weight loss: Simply feed 5 tablets per 10 kg of body weight over the course of the day as "treats".

The daily dose should not exceed 10 % of the dry food intake. Recommended duration of feeding: Until the desired body weight has been reached.

For weight stabilisation or digestive disorders:

Simply feed 2–3 tablets per 10 kg of body weight over the course of the day as "treats". Your dog's primary food can be supplemented with **Canifiber®** on an ongoing basis to stabilise his weight.



Available in:

- Jar 140 g (Article no. 523865) (approx. 60 tabs)
- Jar 280 g (Article no. 523875) (approx. 120 tabs)
- Jar 520 g (Article no. 523885) (approx. 225 tabs)





CaniAgil® Tabs

**Dietary supplement for dogs
To support the joint metabolism in osteoarthritis**

Uses:

- For growing dogs, particularly those of large breeds
- For high stress on the joints of sporting and working dogs
- For treatment of degenerative conditions of the musculo-skeletal system
- For age-related joint problems (arthritis)

Ingredients: Green-lipped mussels, freeze-dried (*Perna canaliculus*) (15 %); Poultry meat meal; Dried algae (*Schizochytrium* sp.); Lignocellulose; Calcium carbonate; Whey powder, Brewers' yeast, dried; Egg, dried; Spinach, dried; Poultry liver, dried, Herring meal; Magnesium stearate

Analytical constituents: Protein 30 %; Fat content 13 %; Crude fibre 8 %; Crude ash 14 %; Omega-3 fatty acids 3,3 %; Eicosapentaenoic acid (EPA) 1,3 %; Docohexaenoic acid (DHA) 1,1 %

Additives per kg: **Nutritional additives:** Vitamin C 2.750 mg; Vitamin E 5.000 mg, **Technological additives:** Antioxidants: natural extracts with a high content of tocopherol (=natural vitamin E) 200 mg

Sensory additives: Devil's claw



CaniAgil® Tabs supplements your dog's diet with nutrients from shellfish and plants known for their supportive effect on the function of connective tissue, cartilage and joints:

Freeze-dried green-lipped New Zealand mussels. (Supplement: 15 % pure mussel powder) The green-lipped mussel *Perna canaliculus* contains a natural active complex of glycosaminoglycans (GAGs), special omega-3 fatty acids¹, amino acids², trace elements³ and natural antioxidants. In scientific studies on dogs, positive effects on arthritis symptoms were documented at a dosage of 0.45 g/10 kg body weight (Bierer & Bui, 2002). **CaniAgil® Tabs** correspond to 0.6 g per 10 kg of the dog's weight when fed according to the recommended dosage.

When *Perna canaliculus* is added to the diet, reductions in pain and stiffness can be observed. These positive effects cannot be attributed to a single, isolated substance; rather, the entire active complex in the green-lipped mussel is responsible for them.

Omega-3 fatty acids Total content of omega-3 fatty acids: 3.3 %; eicosapentaenoic acid (EPA): 1.3 %; docohexaenoic acid (DHA): 1.1 % The high level of additional omega-3 fatty acids effectively narrows the usual ratio of omega-6 to omega-3 fatty acids in the

diet. This naturally reduces the inflammatory response of the body.

Vitamin E (supplement: 5,000 I.U./kg) (supplement: 5,000 I.U./kg) is crucial to the protection of the unsaturated fatty acids (omega-3 fatty acids) and the cartilage cells from oxidation by free radicals. They form during inflammatory processes in the joint at levels significantly higher than usual. Furthermore, vitamin E is important for the preservation and stability of the membranes, particularly in skeletal muscles. It supports the development of the muscle tissue to stabilise the joints.

Vitamin C (supplement: 2,750 mg/kg) is crucial to the body's own collagen production (synthesis). Under stressful conditions (e.g. joint pain), your dog's body may not produce enough vitamin C. Supplementing his diet with vitamin C thus supports collagen formation and promotes joint and cartilage stability.

High-quality animal proteins support protein metabolism, the optimal function of which is extremely important for muscle and cartilage metabolism.

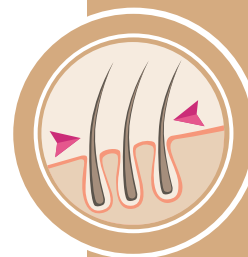
Use and dosage:

Giving the correct dosage of **CaniAgil® Tabs** is very easy. Simply feed 1 1/2 tablets per 10 kg of body weight over the course of the day as "treats".



Available in:

- Jar 140 g (Article no. 523845) (approx. 60 tabs)
- Jar 280 g (Article no. 523855) (approx. 120 tabs)
- Jar 520 g (Article no. 523945) (approx. 225 tabs)



Caniderm[®] Tabs/Oil

Dietary supplement for dogs
For supporting skin function in dermatitis and excess shedding

Uses:

- Dull, dry fur
- Coarse hair, pigmentation disorders, shedding problems
- Hair loss
- Skin irritations, skin inflammations
- Allergic skin problems
- Sensitive or sore paws
- Pressure sores

Ingredients: Brewers' yeast, dried (30 %); Dried algae (Schizochytrium sp.); Poultry meat meal; Lignocellulose; Calcium carbonate; Whey powder; Egg, dried; Poultry liver, dried; Herring meal; Magnesium stearate

Analytical constituents: Protein 32 %; Fat content 11 %; Crude fibre 5 %; Crude ash 13 % omega-3 fatty acids: 3,5 %; Eicosapentaenoic acid (EPA) 1,5 %; Docohexaenoic acid (DHA) 1,3 %

Additives per kg: **Nutritional additives:** Biotin 830.000 mcg; zinc (as amino acids zinc chelate and zinc hydrate) 1.200 mg; Ferric (as Ferric-III-oxide) 4.200 mg **Technological additives:** Antioxidants: natural extracts with a high content of tocopherol (=natural vitamin E) 200 mg



Caniderm® Tabs contain a beneficial combination of various nutrients which interact effectively to support the health and quality of your pet's skin and fur:

Amino acid zinc chelate: (Supplement: 1,200 mg/kg corresponds to 4 mg organically bound zinc per 10 kg of the dog's weight when the recommended dose is given.) Zinc is a component in various enzyme systems. Symptoms of a deficiency include chapped, cracked skin (parakeratosis), pigmentation lightening and hair loss. For dogs with dermatosis, adding zinc to their diet has a positive influence on their skin and fur. The amino acid zinc chelate as an organic zinc compound has an absorption level 4–5 times higher than that of inorganic zinc sources.

Biotin: (Supplement: 830,000 mcg/kg corresponds to 3,000 mcg per 10 kg of the dog's weight when the recommended dose is given.) Biotin (vitamin H) is indispensable for the synthesis of keratin, the primary substance of epithelial cells in skin, hair and claws. Symptoms of biotin deficiency include premature greying, dull, dry hair/fur, hair breakage, hair loss, dandruff, secondary inflammation with sloughing and itching. In healthy dogs, the biotin requirement is covered to a large extent by synthesis in the large intestine. In dogs with the aforementioned skin and fur problems, giving them supplements of high concentrations of biotin quickly resulted in improvement.

Omega-3 fatty acids: Total content of omega-3 fatty acids:

3.5 %; eicosapentaenoic acid (EPA): 1.5 %; docosahexaenoic acid (DHA): 1.3 % Supplements with a high content of omega-3 fatty acids naturally reduces the inflammatory response of the body. Supplementing your dog's diet in a targeted manner with omega-3 fatty acids is recommended to reduce inflammatory skin reactions and to promote healthy, shining fur.

Brewers' yeast (content: 30%) is a natural complex of various active substances shown to have a positive influence on the quality of your pet's skin and fur:

- vitamin B complex (brewers' yeast has the highest natural content of vitamin B!)
- organically bound trace elements such as iron, zinc, copper, manganese, selenium
- pantothenic acid (important for skin function pigmentation)

Use and dosage:

Giving the precise dosage of **Caniderm® Tabs** is as easy as you would think. Simply feed 1 1/2 tablets per 10 kg of body weight over the course of the day as "treats". Treatment should be given for at least 4–6 weeks.

Use Caniderm® Oil:

A small amount of oil (a little goes a long way) is massaged regularly into the affected area of the skin. The positive effects are evident after just a few days.



Available in:

- Jar 140 g (Article no. 523825) (approx. 60 Tabs)
- Jar 280 g (Article no. 523835) (approx. 120 Tabs)
- Jar 520 g (Article no. 523955) (approx. 225 Tabs)

Available in:

- Bottle 50 ml (Article no. 523915)





CanAge® Tabs

**Dietary supplement for dogs
for the prevention of age-related problems**

Uses:

- First signs of ageing
- Lack of vitality and activity in mature dogs
- Age-related cardiovascular problems
- Early greying
- Age-related cloudiness of the lens (cataracts)



Ingredients: Grape pips expeller (30 %); Lignocellulose; Dried algae (Schizochytrium sp.); Poultry meat meal; Whey powder; Brewers' yeast, dried; Egg, dried; Poultry liver, dried; Herringmeal; Magnesium stearate

Analytical constituents: Protein 20 %; Fat content 11 %; Crude fibre 11 %; Crude ash 9,5 %; Omega-3 fatty acids: 2,5 %; Eicosapentaenoic acid (EPA): 1,0 %; Docohexaenoic acid (DHA): 0,9 %

Additives per kg: **Nutritional additives:** Vitamin E 5.000 mg

Technological additives: Antioxidants: natural extracts with a high content of tocopherol (=natural vitamin E) 200 mg

CanAge® Tabs supplement the dog's diet in a targeted manner with nutrients known for their positive effect age-related problems:

Grape seed, cold-pressed: (Content: 30 %)

The complex active substances in grape seeds are among the most effective natural substances in the neutralisation of free radicals in the body (ORAC value for grape seeds, cold-pressed: 1748 µmol TU/g). The grape seed flour in **CanAge® Tabs** is de-oiled in a gentle cold-press process and not by chemical extraction. Thus the unique natural active complex in the grape seed is fully preserved.

Marigold: Supplement from *Tagetes erecta* (1,200 mg/kg xanthophylls: lutein, zeaxanthin)

Marigolds are a natural source of the carotinoids lutein and zeaxanthin. In recent years, these have been the subject of targeted ophthalmological research in conjunction with age-related blindness (cataracts). Lutein and zeaxanthin have been shown to play a primary role in the neutralisation of free radicals in the lens and macula of the eye. When age-related cataracts are present, the concentration of lutein in the macula is significantly reduced.

Omega-3 fatty acids: (total content of omega-3 fatty acids: 2.5 %; eicosapentaenoic acid (EPA): 1.0 %; docohexaenoic acid (DHA): 0.9 %)

The high level of additional omega-3 fatty acids effectively narrows the usual ratio of omega-6 to omega-3 fatty acids in the diet. Omega-3 fatty acids are essential for brain function and help to alleviate inflammation.

Vitamin E: (Supplement of vitamin E 5.000 mg/kg)

Vitamin E is one of the most important antioxidants in cell metabolism. Vitamin E supplements are therefore recommended to reduce the risk of cell damage from free radicals and to limit the effect of stress on the body in general. It also protects the polyunsaturated fatty acids (omega-3 fatty acids) and carotinoid from oxidation.

High-quality animal proteins support protein metabolism, the optimal functioning of which is extremely important for your dog's health and in his old age.

Use and dosage:

Giving the precise dosage of **CanAge® Tabs** is as easy as you would think. Simply feed 1 1/2 tablets per 10 kg of body weight over the course of the day as "treats". **CanAge® Tabs** tastes like delicious treats to your dog or cat!



Available in:

- Jar 140 g (Article no. 523805) (approx. 60 Tabs)
- Jar 280 g (Article no. 523815) (approx. 120 Tabs)





Canilmmun[®] Tabs

Dietary supplement for dogs to support their natural immune defence system

Uses:

- Compensation of the immunity gap (= the body's own immunity is not yet completely developed) in puppies after weaning and in young dogs
- Immune suppression in older dogs
- High stress due to living conditions or work levels
- Lack of vitality and immune resistance after illness (reconvalescence/recovery)
- Sensitive dogs or dogs kept exclusively indoors with inadequate "natural training" of the immune system

Ingredients: Brewers' yeast, dried (28 %); Poultry meat meal; Lignocellulose; Whey powder; Calcium carbonate; Egg, dried; Poultry liver, dried; Rye, malted; Herring meal; Magnesium stearate **Analytical constituents:** Protein 26 %; Fat content 6,5 %; Crude fibre 6,5 %; Crude ash 15 % **Additives per kg:** **Nutritional additives:** Vitamin C 10.000 mg; Ferric (as Ferric-III-oxide) 1.400 mg **Technological additives:** Antioxidants: natural extracts with a high content of tocopherol (= natural vitamin E) 200 mg



Canilmmun® Tabs supplement the dog's diet in a targeted manner with nutrients known for their stimulating effect on the general canine immune system:

Brewer's yeast (content: 28 %) is a natural complex of various active substances that have a positive influence on the immune system.

- Natural enzymes (--> vitality in puppies/young dogs)
- Vitamin B complex
- Choline (--> liver protection)
- Folic acid (--> formation of white blood cells/antibodies)
- Glutathione (--> antibody formation)

Special cell wall components of brewers' yeast (β 1.3/1.6 glucans) have a proven positive effect on the immune system overall. These natural carbohydrate compounds, found only in yeasts and fungi, are ingested by dogs in the wild via contact with the soil. Their positive, direct effect on the activity and efficacy of the white blood cells in the defence against infectious pathogens has been proven in extensive studies on various types of animals as well as humans over a period of more than 10 years. The reason for the stimulating effect of the glucans on the body's own defence system is the fact that the white blood cells (macrophages) are equipped with receptors able to detect and bind β -1.3- and β -1.6 glucans. The contact with the glucans stimulates them to form various cytokines (mediators). These then support the defence reaction of the entire body. This effect of the glucans is enhanced when combined with vitamin C.

Vitamin C: Supplement: 10,000 mg/kg. The dog's body does not produce enough vitamin C in stressful situations or when the dog has an especially heavy workload. It is essential for maintaining leukocyte function and for limiting the effects of stress on the body. Quantities by the dog if it is under stress.

High-quality animal proteins support protein metabolism, the optimal functioning of which is essential to the immune defence system.

Use and dosage:

Giving the correct dosage of **Canilmmun® Tabs** is very easy. Simply feed 1 1/2 tablets per 10 kg of body weight over the course of the day as "treats". Treatment should be given for at least 4–6 weeks. Repeat treatments at 14-day intervals have a positive effect on sensitive dogs. Young animals can be given **Canilmmun® Tabs** from the fifth week to the end of the growth period.










Available in:

- Jar 140 g (Article no. 523895)
(approx. ca. 60 Tabs)
- Jar 280 g (Article no 523905)
(approx. 120 Tabs)



Summary of the most common canine complaints:

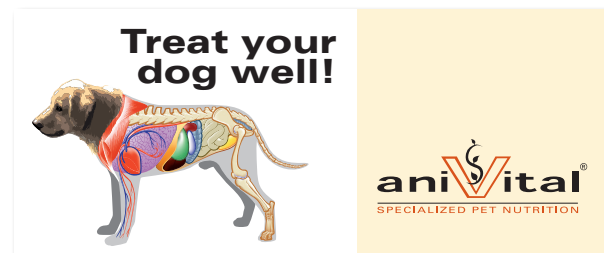
aniVital® offers help for the following problems with an intelligent combination of highly effective supplements:

 Problem area skin & fur	 Problem area joints & bones	 Problem area Overweight	 Problem area immune metabolism	 Problem area aging (Anti-Aging)
<p>CanIDerm® Tabs (dietary supplement) CanIDerm® Oil (external skincare)</p>  <ul style="list-style-type: none"> • dull, dry fur (CanIDerm® Tabs) • fragile fur, pigmentation problems, fur growth problems, fur loss (CanIDerm® Tabs) • skin irritation, skin inflammation (CanIDerm® Tabs & Oil) • allergic skin problems (CanIDerm® Tabs & Oil) • sensitive or sore paws (CanIDerm® Tabs & Oil) • calluses, scrapes, bites (CanIDerm® Oil) <p>Available sizes</p> <ul style="list-style-type: none"> • Bottle 50ml (Article no. 523915) • Jar 140g approx 60 tabs (Article no. 523825) • Jar 280g approx 120 tabs (Article no. 523835) • Jar 520g approx 225 tabs (Article no. 523955) 	<p>CaniAgil® Tabs (dietary supplement)</p>  <ul style="list-style-type: none"> • intensive growth, loose joints and tendons in young dogs of large breeds • hard-working joints of sports and working dogs • joint and bone problems resulting from existing pathological changes (HD, OCD, incorrect joint position) • age-related joint problems (arthrosis) <p>Available sizes</p> <ul style="list-style-type: none"> • Jar 140g approx 60 tabs (Article no. 523845) • Jar 280g approx 120 tabs (Article no. 523855) • Jar 520g approx 225 tabs (Article no. 523945) 	<p>CaniFiber® Tabs (dietary supplement)</p>  <ul style="list-style-type: none"> • adiposity (body weight > 20% higher than the breed average) => major weight reduction required slight overweight => decrease and stabilise weight gradually • low movement/activity • prone to overweight in later life • digestive problems, tendency to pulpy stools or diarrhoea • diabetes mellitus <p>Available sizes</p> <ul style="list-style-type: none"> • Jar 140g approx 60 tabs (Article no. 523865) • Jar 280g approx 120 tabs (Article no. 523875) • Jar 520g approx 225 tabs (Article no. 523885) 	<p>CanImmune® Tabs (dietary supplement)</p>  <ul style="list-style-type: none"> • reduced immunity in puppies after weaning • poor immunity in growing dogs • immune suppression in older dogs • high stress due to living conditions • high performance stress • lack of vitality and resistance after illness • sensitive dogs with a tendency to respiratory or digestive problems <p>Available sizes</p> <ul style="list-style-type: none"> • Jar 140g approx 60 tabs (Article no. 523895) • Jar 280g approx 120 tabs (Article no. 523905) 	<p>CanAge® Tabs (dietary supplement)</p>  <ul style="list-style-type: none"> • first signs of ageing • lack of vitality and activity in mature dogs • age-related circulatory problems • early greying • age-related cloudiness of the lens • increased oxygen turnover in highly active dogs <p>Available sizes</p> <ul style="list-style-type: none"> • Jar 140g approx 60 tabs (Article no. 523805) • Jar 280g approx 120 tabs (Article no. 523815)

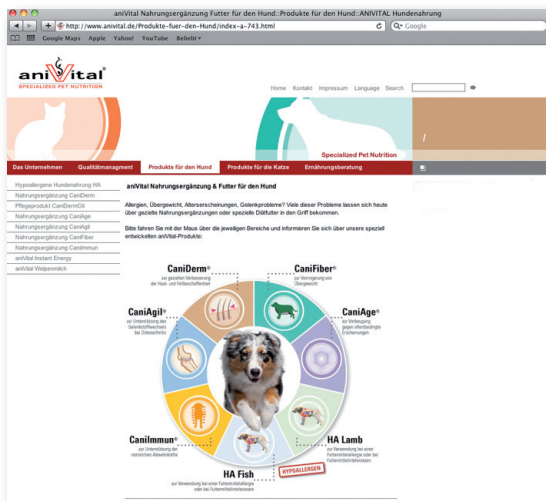
Sales Promotion



high-selling brochures at the POS
Article no. 35580501



3D ceiling flyers for customer advice
Article no. 355715



Internet:
online product information
for your customers

aniVital shelf stopper
Article no. 355755



advertising in publications
with high circulation

Frequently asked questions:



Canilmmun®

Our King Charles Spaniel is an award-winning show dog. His fur is absolutely beautiful, but requires a lot of care and brushing. For this reason we keep him primarily indoors. However, recently we've noticed that he seems to be particularly sensitive. He often has problems with diarrhea, especially after we've been to a dog show.

It is likely that your valuable dog very rarely has the opportunity to encounter companions of his own kind outdoors and to strengthen his immune system through harmless contact with bacteria and viruses in the natural environment. He therefore becomes ill very quickly when he comes into contact with other dogs at shows, who could be carrying infectious germs. You should try to let your dog exercise more outdoors, and you can train his immune system with the new **Canilmmun®**-tablets, so that his resistance increases.

My dog is slightly sensitive and gets diarrhea easily. I'm looking for a way to make him healthier and increase his resistance. Isn't there a supplement in many of the complete dog foods that would do this?

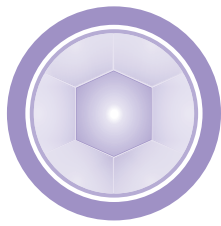
Most of the supplements designated as immune protection by the manufacturers are merely added vitamins or prebiotic supplements, which have an effect comparable to that of probiotic yoghurt. These supplements certainly are not harmful, but whether they actually provide immune protection of any kind is doubtful.

The new **Canilmmun®** contains a natural supplement – β 1.3 / 1.6 glucans from yeast, which has a proven, direct effect on the activity and resistance potential of the white blood cells. Glucans are also used for humans – in vaccinations as well, in order to enhance their effect. Because this supplement acts directly on the white blood cells, it is considerably more effective than vitamin supplements or prebiotic agents.

In three weeks I will be getting a young whelp from its breeder. I have read that whelps often have difficulties with diarrhea and respiratory infections when they first come to a new owner. Is there anything I can do to prevent this?

First of all, it is important that you continue to feed the whelp the diet he was given by the breeder. In addition, there is something you can do to strengthen his immune defenses. Between eight and twelve weeks of age, whelps are particularly susceptible to infections because their own immune systems aren't well-developed yet. **Canilmmun®** targets this gap and directly stimulates the whelps' immune resistance with natural extracts from yeast and vitamin C. The dangerous immunity gap of the whelps in their first weeks with their new owners is thus effectively neutralized.

Frequently asked questions:



CaniAge®

Our dog is now nine years old and seems increasingly listless and lethargic. The vet says he isn't ill at all. Is there anything we could feed him to promote his health and well-being as he ages?

Your dog is obviously getting into his golden years and is showing signs of the weakness of old age. In addition to sufficient exercise and a diet designed especially for elderly dogs, you can also offer your dog supplements such as **CaniAge®**. These tasty tablets support your dog's immune shield against free radicals in targeted fashion with natural agents such as grapeseed flour, lutein, omega-3 fatty acids and vitamin E, thus reducing the difficulties of old age.

A previous dog of mine got cataracts in old age. It got to the point where he was completely blind at the end. In health food stores I've seen products for humans that are especially designed to promote ocular health in old age. Is there anything similar for my dachshund, who is now seven years old?

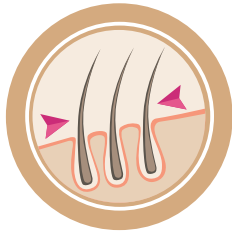
The formation of cataracts is attributed to a deficiency in certain antioxidants in the lens of the eye, which appears with increasing age. These antioxidants protect the lens from ultraviolet light. They are special carotenoids, namely lutein and zeaxanthin. These are contained in marigolds (*Tagetes erecta*).

CaniAge® contains lutein taken from marigold flowers and can be given to the dog without any adverse side effects.

My doctor recommended that I have a glass of red wine and fish oil capsules daily to strengthen my ageing cardiovascular system. My dog is also getting older, but I can't very well offer him red wine...

Well, certainly not red wine, but you can provide him with the substances that make the red wine so valuable from a medical point of view - polyphenols, which are found in grapes. These are also contained as a natural complex in grapeseed oil. **CaniAge®** Tabs contain grapeseed flour. This cold-pressed flour is also used in foodstuffs and has the highest concentration of polyphenols found in foodstuffs. By the way, **CaniAge®** also contains omega 3 fatty acids from dried algae (*Schizochytrium* sp.).

Frequently asked questions:



Caniderm®

A few weeks ago, our bitch started having problems with her fur. Her fur is becoming increasingly rough and doesn't shine like it used to. We are already feeding her a high-quality diet - what else should we do?

Today, fur problems are rarely caused by dietary deficiencies. Fluctuations in the hormonal metabolism are often the cause, such as false pregnancy, being in heat, sterilization, etc.

In these cases a special hair treatment with high dosages of vital nutrients such as biotin, zinc, and omega 3 fatty acids can help. **Caniderm®**-Tabs contain an effective combination of these nutrients, which can solve the problem in just a short time.

Recently our dog has begun licking his paws more intensively. It goes so far that actual wounds develop. We don't know how to prevent him from doing this. Are there any supplements that might bring him relief?

Caniderm® contain ingredients that have proven to be effective in such cases. In particular, the dosage is provided in an amount which is also effective - which is not the case for all of the preparations on the market. Zinc chelate, an organic zinc compound, has achieved positive results in dogs with dermatosis equal to those achieved with high doses of biotin. In addition, omega 3 fatty acids from dried algae (*Schizochytrium* sp.) help to reduce the inflammation.

Whenever our bitch goes into heat, she gets blisters on her abdomen, and there are itchy red spots between her toes as well. What can we do to prevent this?

Caniderm® is outstandingly suited for this purpose. It is based on a proven, high-quality substance used in skin care, namely cold-pressed grapeseed oil. Just massage **Caniderm®** Oil into the affected areas of the skin, and brings relief after only a few applications. The addition of lavender oil ensures that the dogs don't lick the oil off.

Frequently asked questions:



CaniAgil®

I have a young Bernese mountain dog. Our breeder recommended that we give him a supplement to support his joint development as a preventive measure. What can you recommend in this regard?

We recommend the new **CaniAgil®**-Tabs. They contain a combination of ingredients which will support your young dog's joint development. Among other things, the CaniAgil Tabs contain green-lipped mussel powder and omega 3 fatty acids from dried algae (*Schizochytrium* sp.).

CaniAgil® contains 15% mussel powder, while other products contain up to 30%. How do you explain the difference - in price as well?

It's not the percentage of mussel extract alone that's important. First of all, **CaniAgil®** contains a complete mussel extract from *perna canaliculus*. Many other products contain only de-fatted mussel powder, from which the essential nutrients have been removed. This makes it considerably cheaper.

Second, the amount of mussel powder the dog is given according to the recommended dosage is important, i.e. how many grams per day. The percentual proportion is not significant. When **CaniAgil®** is given, the dog gets 0.6 grams of mussel extract per 10 kilos of body weight. This amount is within a range that achieves results (> 0.45 g/10 kg body weight). This is the value you need to check when you do product comparisons.

My dog suffers from hip dysplasia and is becoming increasingly lame with age. Could dietary supplements be of any help in this regard? I don't want to give him medication constantly.

In comparable cases, **CaniAgil®** has helped considerably to alleviate such symptoms. In contrast to many competing products, **CaniAgil®** is a compound preparation, i.e. it contains a variety of natural agents and not only one isolated substance:

- *Perna canaliculus* - the green-lipped mussel, provides valuable building blocks for the cartilage and synovial fluid
- Omega 3 fatty acids - from dried algae (*Schizochytrium* sp.), inhibit inflammation
- Vitamin E protects cells in the case of infections
- Vitamin C promotes the formation of connective tissue

Frequently asked questions:



Canifiber®

Our Labrador - who has always been very fond of his food - has gained an immense amount of weight since he was castrated. The vet prescribed a diet for him and he has to lose 5 kilos. We are feeding him a „light“ dog food, but we simply have not managed to reduce his weight significantly!

We often hear of similar cases. It could be that some „light“ dog foods still contain too much fat, or that the dogs are given the „light“ food in unlimited quantities.

Canifiber® Tabs have proven to be effective in such cases. They satisfy the dog's hunger with natural dietary fibers so well that he will considerably reduce his usual food intake. And the great thing about them is that you can give your dog **Canifiber®** Tabs as a treat in addition to his regular food. This also reduces the use of high-energy „rewards“.

When our dog eats something outdoors, he often has problems with diarrhea. This usually lasts two or three days and then gets better. Sometimes his stool is quite soft for longer periods of time. What can we do to solve this problem?

Canifiber®-Tabs are very helpful in such situations. They stabilize your dog's digestion with natural dietary fibers and the stool becomes more solid. In the non-infectious cases of diarrhea described, soluble dietary fibers with a prebiotic effect ensure that the intestinal flora regenerate quickly.

Why are different dosages of Canifiber® specified?

In order to satisfy the hunger of the dog and thus to reduce his weight, a minimum quantity of dietary fibers and the water-binding psyllium is required. Therefore, to reduce weight, a high dosage (4–5 tabs/10 kg of body weight) is recommended. To stabilize weight or in the case of digestive problems, a lower quantity of tabs suffices to achieve the desired result; that is, 2–3 tabs/10 kg of body weight in dogs. For reasons of price we recommend that you buy the large package (220 tabs) for larger breeds of dogs!



FeliFiber® Tabs

Dietary supplement for cats to support weight loss
Also facilitates the gentle elimination of swallowed hair. (fur balls)

Uses:

- Obesity (body weight > 20 % over the average for the breed) => Significant weight reduction is required
- Slightly overweight => the pet's weight should be slowly reduced and stabilized
- Little exercise
- Tendency to be overweight in old age
- As support for digestive disorders caused by food



Ingredients: Lignocellulose; Carrot fibre; Apple fiber; Orange fibre; Poultry meat meal; Whey powder, Brewers' yeast, dried; Egg, dried; Poultry liver, dried, Herring meal; Psyllium husks; Magnesium stearate, Soyabean oil

Analytical constituents: Protein 19 %; Fat content 5,5 %; Crude fibre 20 %; Crude ash 7 % **Additives per kg:** **Nutritional additives:** L-carnitine 10.000 mg **Technological additives:** Antioxidants: natural extracts with a high content of tocopherol (=natural vitamin E) 200 mg

FeliFiber® Tabs supplements the cat's diet in a targeted manner with L-carnitine and a balanced combination of fibres known for their regulating effect on digestion and their satiating effect:

Dietary fibre is divided into soluble and insoluble fibre:

- Insoluble fibres (e.g. cellulose, hemicellulose) do not contain any usable energy and thus reduce the energy density of the total ration when used as a supplement. They also have a solidifying influence on the contents of the dog's intestines.
- Soluble fibres (e.g. pectin, pentosans) are partially metabolised by intestinal bacteria and have a prebiotic effect on the intestinal flora.

L-Carnitin (Supplement: 10,000 mg/kg - corresponds to 60 mg L-carnitine per day when the recommended dose is given) ensures that high volumes of fatty acids in the metabolism are properly processed and the by-products (ketone bodies) can be quickly removed. L-carnitine promotes fat-burning, reduces fatty deposits in tissues and supports cardiac activity.

Use and dosage:

Giving the correct dosage of FeliFiber® Tabs is very easy. It is fed as a supplement to your dog's regular diet - no diet change is required. Thanks to their outstanding acceptance, the Tabs also serve as a satiating reward between meals and thus replace other energy-rich snacks.

For weight loss: For an adult cat weighing 5 kg, simply give 10–12 tablets as treats over the course of the day. The daily dose should not exceed 10 % of the dry food intake. Recommended duration of feeding: Until the desired body weight has been reached.

For digestive problems, weight stabilisation and hair-ball prevention:

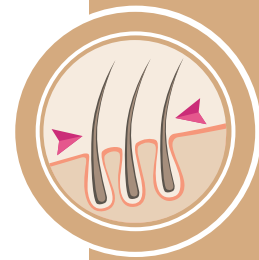
For an adult cat weighing 5 kg, simply give 4–6 tablets as treats over the course of the day. Your cat's primary food can be supplemented with **FeliFiber® Tabs** on an ongoing basis to stabilise his weight.



Available in:

- Jar 70 g (Article no. 523755) (approx. 140 Tabs)
- Jar 130 g (Article no. 523765) (approx. ca. 260 Tabs)





FeliDerm® Tabs

Dietary supplement for cats to support skin function in dermatitis and excess shedding

Uses:

- Dull, dry fur
- Coarse hair, shedding problems
- Hair loss
- Skin irritations, skin inflammations
- Allergic skin problems
- Sensitive or sore paws



Ingredients: Brewers' yeast, dried (30 %); Dried algae (Schizochytrium sp.); Poultry meat meal; Lignocellulose; Calcium carbonate; Whey powder; Egg, dried, Poultry liver, dried; Herring meal; Magnesium stearate

Analytical constituents: Protein 30 %; Fat content 11 %; Crude fibre 6,5 %; Crude ash 12 %; Omega-3 fatty acids: 3,5 %; Eicosapentaenoic acid (EPA) 1,5 %; Docohexaenoic acid (DHA) 1,3 %,

Additives per kg: **Nutritional additives:** Biotin 830.000 mcg; zinc (as amino acids zinc chelate and zinc hydrate) 1.200 mg; Ferric (as Ferric-III-oxide) 4.200 mg **Technological additives:** Antioxidants: natural extracts with a high content of tocopherol (=natural vitamin E) 200 mg

FeliDerm® Tabs supplements your cat's diet in a targeted manner with nutrients known for their positive effect on the health and texture of skin and fur:

Amino acid zinc chelate: (Supplement: 1,100 mg/kg corresponds to 3–4 mg organically bound zinc per day when the recommended dose is given.)

Zinc is a component in various enzyme systems. Symptoms of zinc deficiency include chapped, cracked skin (parakeratosis), pigmentation lightening and hair loss. For cats with dermatosis, adding zinc to their diet has a positive influence on their skin and fur. The amino acid zinc chelate as an organic zinc compound has an absorption level 4–5 times higher than that of inorganic zinc sources.

Biotin: (Supplement: 830,000 mcg/kg – corresponds to approximately 1,500 mcg per day when the recommended dose is given)

Biotin (vitamin H) is indispensable for the synthesis of keratin, the primary substance of epithelial cells in the skin and in hair and claws. Symptoms of biotin deficiency include premature greying, dull, dry hair/fur, hair breakage, hair loss, dandruff, secondary inflammation

with sloughing and itching. In healthy cats, the need for biotin is largely met by microbial synthesis in the large intestine. In cats with the aforementioned skin and fur problems, giving them supplements of high concentrations of biotin very quickly resulted in improvement in many cases.

Omega-3 fatty acids: (Total content of omega-3 fatty acids: 3.5 %; eicosapentaenoic acid (EPA): 1.5 %; docohexaenoic acid (DHA): 1.3 %)

The high level of additional omega-3 fatty acids effectively narrows the usual ratio of omega-6 to omega-3 fatty acids in the diet. This naturally reduces the inflammatory response of the body. Supplementing your cat's diet in a targeted manner with omega-3 fatty acids is recommended to alleviate inflammatory skin reactions and to promote healthy, shining fur.

Brewers' yeast (content: 30 %) is a natural complex of various active substances shown to have a positive influence on the quality of your pet's skin and fur:

- vitamin B complex (brewers' yeast has the highest natural content of vitamin B!)
- organically bound trace elements such as iron, zinc, copper, manganese, selenium
- pantothenic acid (important for skin function pigmentation)

Use and dosage:

Giving the correct dosage of **FeliDerm® Tabs** is very easy. For an adult cat weighing 5 kg, simply give 3–4 tablets as "rewards" over the course of the day. Treatment should be given for at least 4–6 weeks.



Available in:

- Jar 70 g (Article no. 523715) (approx. 140 Tabs)
- Jar 130 g (Article no. 523725) (approx. 260 Tabs)



FeliImmun[®] Tabs

Dietary supplement for dogs to support their natural immune defence system

Uses:

- Compensation of the immunity gap (= the body's own immunity is not yet completely developed) in kittens after weaning and in young cats
- Immune suppression in older cats
- Stress due to living conditions
- Lack of vitality and immune resistance after illness (reconvalescence/recovery)
- Sensitive cats or cats kept exclusively indoors with inadequate "natural training" of the immune system



Ingredients: Brewers' yeast, dried (28 %); Poultry meat meal; Lignocellulose; Whey powder; Calcium carbonate; Egg, dried; Poultry liver, dried; Rye, malted; Herring meal; Magnesium stearate

Analytical constituents: Protein 26 %; Fat content 6,5 %; Crude fibre 6,5 %; Crude ash 15 %

Additives per kg: **Nutritional additives:** Vitamin C 15.000 mg; Ferric (as Ferric-III-oxide) 1.400 mg **Technological additives:** Antioxidants: natural extracts with a high content of tocopherol (=natural vitamin E) 200 mg

FeliImmun® Tabs supplement the cat's diet in a targeted manner with nutrients known for their supportive effect on the general feline immune system:

Brewer's yeast (content: 28 %) is a natural complex of various active substances that have a positive influence on the immune system.

- Natural enzymes (--> vitality in kittens/young cats)
- Vitamin B complex
- Choline (--> liver protection)
- Folic acid (--> formation of white blood cells/antibodies)
- Glutathione (--> antibody formation)

Special cell wall components of brewers' yeast (β 1.3/1.6 glucans) have a proven positive effect on the immune system overall. These natural carbohydrate compounds, found only in yeasts and fungi, are ingested by cats in the wild via their contact with the soil. Their positive, direct effect on the activity and efficacy of the white blood cells in the defence against infectious pathogens has been proven in extensive studies on various types of animals as well as humans over a period of more than 10 years. The reason for the stimulating effect of the glucans on the body's own defence system is the fact that the white blood cells (macrophages) are equipped with receptors able to detect and bind β -1.3- und β -1.6 glucans. The contact with the glucans stimulates them to form various cytokines (mediators). These then support the defence reaction of the entire body. This effect of the glucans is enhanced when combined with vitamin C.

Vitamin C (supplement 15,000 mg/kg) is not produced in sufficient quantities by the cat's body in stressful situations or in conditions of extreme stress. It is essential for maintaining leukocyte function and for limiting the effects of stress on the body. Quantities by the dog if it is under stress.

High-quality animal proteins support protein metabolism, the optimal functioning of which is essential to the immune defence system.

Use and dosage:

Giving the correct dosage of **FeliImmun® Tabs** is very easy. For an adult cat weighing 5 kg, simply give 3–4 tablets as "rewards" over the course of the day. Treatment should be given for at least 4–6 weeks. Repeat treatments at 14-day intervals have a positive effect on sensitive cats. Young animals can be given **FeliImmun® Tabs** from the fifth week to the end of the growth period.

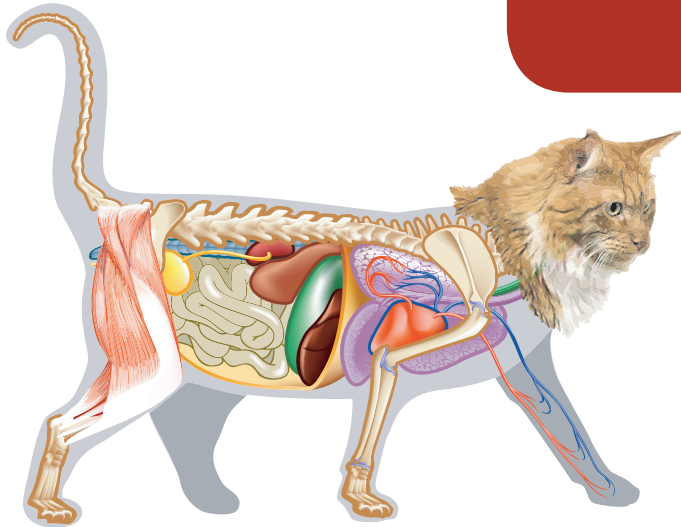


Available in:

- Jar 70 g (Article no. 523735)
(approx. 140 Tabs)
- Jar 130 g (Article no. 523745)
(approx. 260 Tabs)



Summary of the most common cat complaints:



aniVital® offers help for the following problems with an intelligent combination of highly effective supplements:



Problem area skin & fur

FeliDerm® Tabs (dietary supplement)



- dull, dry fur
- fragile fur, pigmentation problems, fur growth problems, fur loss
- skin irritation, skin inflammation
- allergic skin problems
- sensitive or sore paws
- calluses, scrapes, bites

Available sizes:

- Jar 70 g
Article no. 523715
(approx. 140 Tabs)
- Jar 130 g
Article no. 523725
(approx. 260 Tabs)



Problem area Overweight

FeliFiber® Tabs (dietary supplement)



- adiposity (body weight > 20 % higher than the breed average)
=> major weight reduction required slight overweight
=> decrease and stabilise weight gradually
- low movement/activity
- prone to overweight in later life
- digestive problems, tendency to pulpy stools or diarrhoea
- diabetes mellitus

Available sizes:

- Jar 70 g
Article no. 523755
(approx. 140 Tabs)
- Jar 130 g
Article no. 523765
(approx. 260 Tabs)



Problem area immune metabolism

Feli Immun® Tabs (dietary supplement)



- reduced immunity in kitten after weaning
- poor immunity in growing cats
- immune suppression in older cats
- high stress due to living conditions
- high performance stress
- lack of vitality and resistance after illness
- sensitive cats with a tendency to respiratory or digestive problems

Available sizes:

- Jar 70 g
Article no. 523735
(approx. 140 Tabs)
- Jar 130 g
Article no. 523745
(approx. 260 Tabs)

Frequently asked questions:



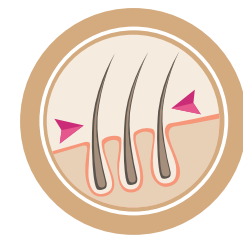
Felimmun®

I have a valuable purebred cat, whom I keep as a housecat. This way she can't pick up any germs. However, I have noticed lately that she frequently has problems with diarrhea or the sniffles after attending cat shows. Could that be due to her diet, or that my wife feeds her too much?

The problem is that your cat has not had enough opportunity to train her immune system, because you keep her isolated in your home. When she encounters other cats at cat shows, she is more susceptible to germs which she may pick up from the other cats, who may not be ill from them. **Felimmun®**-Tabs help your cat to build up a more stable immune system and make her more resistant to infections. The effect is comparable to the protection that outdoor cats gain themselves through contact with harmless germs while they are out hunting and playing in the natural environment.

I have an elderly Siamese cat who worries me a lot recently. She often has the sniffles and seems tired and lethargic. Is there a natural product with which I could increase her vitality?

Felimmun® is a purely natural substance. It's a combination of components of the cell walls of natural yeast with vitamin C. This combination has proven effective in stimulating the overall immune system and is often used successfully in humans as well. You can considerably improve the immune defenses of your Siamese cat with **Felimmun®**.



FeliDerm®

My Maine Coon cat is kept as a house cat and is given only high-quality food. Despite this, her fur is no longer very pretty. It has become dry and scaly. When I brush her, she loses a lot of hair. Should I change her diet?

If you are already feeding her high-quality cat food, that probably won't help much. Instead, try a special hair treatment with the new **FeliDerm®**. It contains a combination of nutrients that are important for healthy fur: biotin, omega 3 fatty acids from dried algae (*Schizochytrium* sp.) and organic zinc chelate.

In winter, our outdoor cat's paws are no longer velvety. They are dry and cracked; she is always licking and even biting them open on occasion. Can you suggest anything we could give her?

FeliDerm® contains substances such as biotin and organic zinc chelate, which are very helpful for dry, cracked paws. After just a short time, you'll see that your cat's paws are once again soft and velvety smooth.

Frequently asked questions:



FeliFiber®

I have three cats in my household, one of which is overweight. The vet recommended that I use a „light“ cat food for her. But I can't do that, as my cats eat from the same bowl during the day. So I can't monitor how much each cat eats. Do you have any ideas how I can get the one cat to lose weight?

FeliFiber® tablets can be offered as a treat in addition to the usual cat food! They reduce the appetite of the cat and lead to consistent weight loss. Your cat will eat less during the day when she is alone. Thus, CaniTabs are ideal for owners of several cats, some of whom are overweight.

My Persian cat tends to gain weight and also has difficulties with hairballs, which she throws up. She cannot tolerate cat food with „anti-hairball“ effects. I don't want to give her such food all the time anyway. Do you have any products you could recommend?

The new **FeliFiber®** is ideal for you. It will help to stabilize your cat's weight. The combination of natural dietary fibres and psyllium also ensure that hairballs are eliminated in gentle fashion.

My Norwegian forest cat isn't supposed to gain weight. My vet has therefore recommended that I don't give her any treats on the side. But she greatly enjoys catching the rolling tablets I have always gotten her.

The new **FeliFiber®** I is just the thing for you! You can use it as a rolling treat for your cat and do something to stabilize her weight at the same time!

